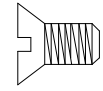
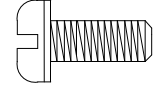


FIXTURE HARDWARE FOR TTI TESTERS

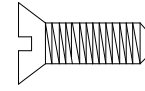
USING 1.1" (27,94) & 2.02" (51,31) TEST PINS



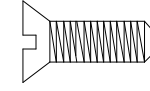
TX-1/4-6-32 FHNS
Flat Head Nylon Screw
.250" (6,35) Long
6-32 Thread



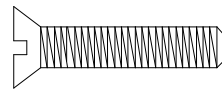
TX-1/2-6-32 PHNS
Pan Head Nylon Screw
.500" (12,70) Long
6-32 Thread



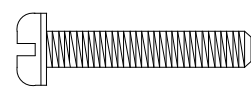
TX-1/2-6-32 FHNS
Flat Head Nylon Screw
.500" (12,70) Long
6-32 Thread



TX-1/2-6-32 FHSS
Flat Head Stainless Steel
.500" (12,70) Long
6-32 Thread



TX-1-6-32 FHSS
Flat Head Stainless Steel Screw
1.000" (25,40) Long
6-32 Thread



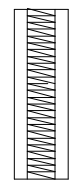
TX-1 1/4-6-32 PHNS
Pan Head Nylon Screw
1.25" (31,75) Long
6-32 Thread



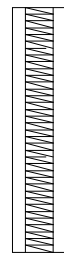
TX-750-250/6-32 MFHS
Male Female Hex Spacer
.750" (19,05) Long
x .250" (6,35) Hex
6-32 Thread



TX-875-250/6-32 MFHS
Male Female Hex Spacer
.875" (22,23) Long
x .250" (6,35) Hex
6-32 Thread



TX-565-250/6-32-DS
Threaded Delrin Spacer
.565" (14,35) Long
x .250" (6,35) Dia.
6-32 Thread



TX-875-250/6-32-DS
Threaded Delrin Spacer
.875" (22,23) Long
x .250" (6,35) Dia.
6-32 Thread



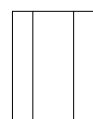
TX-125-312/140 DS
Delrin Spacer
.125" (3,18) Long
x .312" (7,92) Dia
Drilled .140" (3,56) Dia.



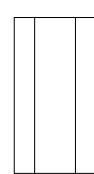
TX-125-250/140 DS
Delrin Spacer
.125" (3,18) Long
x .250" (6,35) Dia.
Drilled .140" (3,56) Dia.



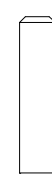
TX-125-250/125 DS
Delrin Spacer
.125" (3,18) Long
x .250" (6,35) Dia.
Drilled .125" (3,18) Dia.



TX-565-250/125 DS
Delrin Spacer
.565" (14,35) Long
x .250" (6,35) Dia.
Drilled .125" (3,18) Dia.



TX-875-250/125 DS
Delrin Spacer
.875" (22,23) Long
x .250" (6,35) Dia.
Drilled .125" (3,18) Dia.



TX-1/2-1/8 DP
Dowel Pin
.500" (12,70) Long
x .125" (3,18) Dia.