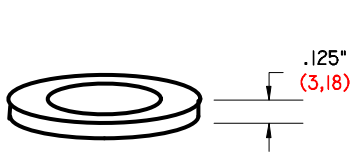
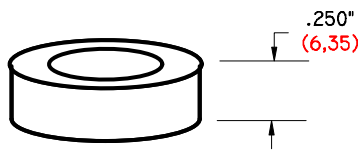


# MOLDED NYLON SPACERS



**TX-125-500 / 257 NSM**

.125" (3,18) Long  
.500" (12,70) O.D.  
.257" (6,53) I.D.



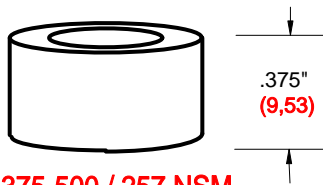
**TX-250-500 / 257 NSM**

.250" (6,35) Long  
.500" (12,70) O.D.  
.257" (6,53) I.D.



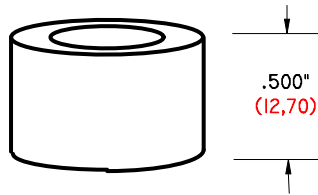
**TX-312-500 / 257 NSM**

.312" (7,92) Long  
.500" (12,70) O.D.  
.257" (6,53) I.D.



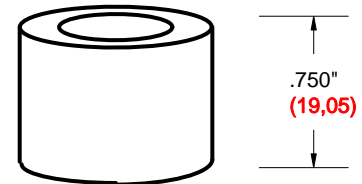
**TX-375-500 / 257 NSM**

.375" (9,53) Long  
.500" (12,70) O.D.  
.257" (6,53) I.D.



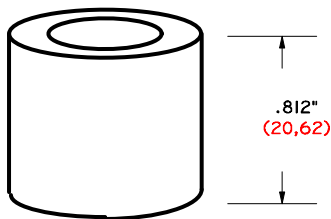
**TX-500-500 / 257 NSM**

.500" (12,70) Long  
.500" (12,70) O.D.  
.257" (6,53) I.D.



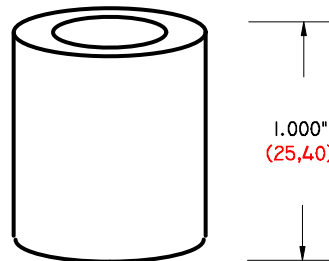
**TX-750-500 / 257 NSM**

.750" (19,05) Long  
.500" (12,70) O.D.  
.257" (6,53) I.D.



**TX-812-500 / 257 NSM**

.812" (20,62) Long  
.500" (12,70) O.D.  
.257" (6,53) I.D.



**TX-1000-500 / 257 NSM**

1.000" (25,40) Long  
.500" (12,70) O.D.  
.257" (6,53) I.D.

THE SPACERS ABOVE ARE MOLDED, RESULTING IN VARIATIONS OF OVERALL LENGTH AND DIAMETER UP TO .015" (0,38).

OTHER SIZES / THREADS ARE AVAILABLE. CALL FOR A QUOTE.

TEST-X FIXTURE PRODUCTS 7117 Arlington Ave. Ste. G  
Riverside, CA 92503  
pH. 951-688-3067 Fax 951-688-1543  
[www.test-x.com](http://www.test-x.com)